

TITO®

# LEGENDS 2



INSTRUCTION GUIDE



**⚠ WARNING: PHOTOSENSITIVITY/EPILEPSY/SEIZURES**

**READ BEFORE USING YOUR PLAYSTATION®2 COMPUTER ENTERTAINMENT SYSTEM.**

A very small percentage of individuals may experience epileptic seizures or blackouts when exposed to certain light patterns or flashing lights. Exposure to certain patterns or backgrounds on a television screen or when playing video games may trigger epileptic seizures or blackouts in these individuals. These conditions may trigger previously undetected epileptic symptoms or seizures in persons who have no history of prior seizures or epilepsy. If you, or anyone in your family, has an epileptic condition or has had seizures of any kind, consult your physician before playing. **IMMEDIATELY DISCONTINUE** use and consult your physician before resuming gameplay if you or your child experience any of the following health problems or symptoms:

- dizziness
- altered vision
- eye or muscle twitches
- loss of awareness
- disorientation
- seizures
- any involuntary movement or convulsion

**RESUME GAMEPLAY ONLY ON APPROVAL OF YOUR PHYSICIAN.**

---

**Use and handling of video games to reduce the likelihood of a seizure**

- Use in a well-lit area and keep as far away as possible from the television screen.
  - Avoid large screen televisions. Use the smallest television screen available.
  - Avoid prolonged use of the PlayStation 2 system.  
Take a 15-minute break during each hour of play.
  - Avoid playing when you are tired or need sleep.
- 

Stop using the system immediately if you experience any of the following symptoms: lightheadedness, nausea, or a sensation similar to motion sickness; discomfort or pain in the eyes, ears, hands, arms, or any other part of the body. If the condition persists, consult a doctor.

**WARNING TO OWNERS OF PROJECTION TELEVISIONS:**

Do not connect your PlayStation 2 system to a projection TV without first consulting the user manual for your projection TV, unless it is of the LCD type. Otherwise, it may permanently damage your TV screen.

**HANDLING YOUR PLAYSTATION 2 FORMAT DISC:**

- This disc is intended for use only with PlayStation 2 consoles with the NTSC U/C designation.
- Do not bend it, crush it or submerge it in liquids.
- Do not leave it in direct sunlight or near a radiator or other source of heat.
- Be sure to take an occasional rest break during extended play.
- Keep this compact disc clean. Always hold the disc by the edges and keep it in its protective case when not in use. Clean the disc with a lint-free, soft, dry cloth, wiping in straight lines from center to outer edge. Never use solvents or abrasive cleaners.

# TAITO<sup>®</sup> LEGENDS 2

Introduction	1
Game controls	3
Navigating The Menus	4
Playing a Game	4
Options	4
Registering to Favorite List	5
Pause Menu	5
The Games in TAITO LEGENDS 2	6
Credits	10
End User License Agreement	11

TAITO LEGENDS 2 Software © 2006 Empire Interactive Europe Ltd. Empire and "E" are trademarks or registered trademarks of Empire Interactive Europe Ltd in the UK, Europe and/or other countries. All rights reserved.  
Licensed from TAITO CORP. Destineer is a registered trademark of Destineer, Inc. All rights reserved.

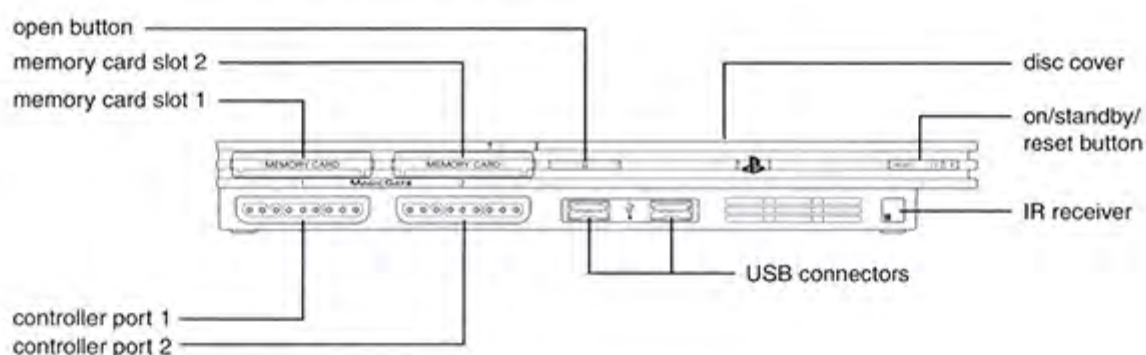
## Introduction

Taito Corporation pioneered coin-operated arcade games and helped create the computer games industry we know today. From the revolutionary and seminal Space Invaders in 1978, through Lunar Rescue and Darius Gaiden, not forgetting classics such as Ray Storm and Puzzle Bobble, hit after hit has made Taito one of the leading coin-op manufacturers and developers of the last 25 years.

Taito Legends 2 offers arcade-perfect versions of an unprecedented selection of titles from the creative masters at Taito. This is the ultimate collection of arcade games ever assembled.

This isn't just a collection of classic games; it's a significant slice of gaming history!

# GETTING STARTED



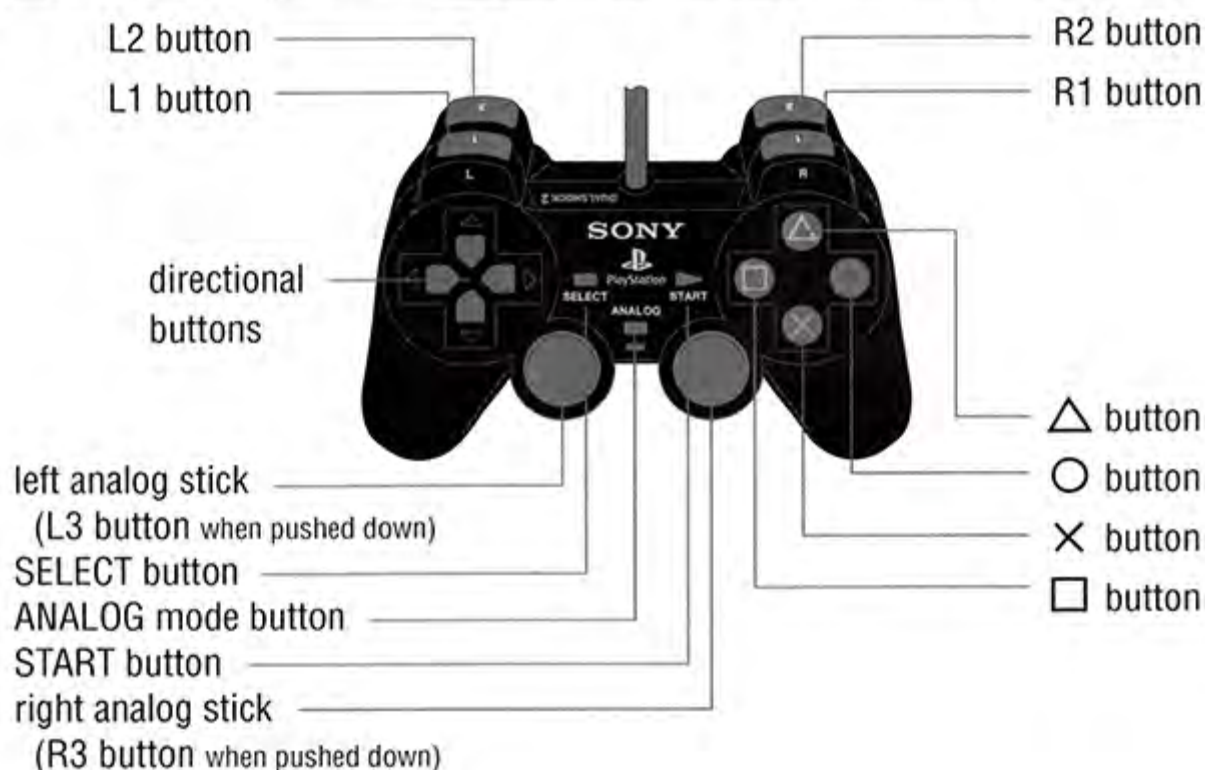
Set up your PlayStation®2 computer entertainment system according to the instructions supplied with your system. Check that the system is turned on (the on/standby indicator is green). Insert the TAITO LEGENDS 2 disc in the system with the label side facing up. Attach game controllers and other peripherals as appropriate. Follow the on-screen instructions and refer to this manual for information on using the software.

## Memory Card (8MB)(for PlayStation®2)

To save game settings and progress, insert a memory card (8MB)(for PlayStation®2) into MEMORY CARD slot 1 of your PlayStation®2 system. You can load saved game data from the same memory card or any memory card (8MB)(for PlayStation®2) containing previously saved games.

# STARTING UP

## DUALSHOCK®2 ANALOG CONTROLLER CONFIGURATIONS



Please note: the digital controller is not supported in this title.

COMMAND	MENUS	IN-GAME
Left analog stick	Navigate menu options	Movement
Directional buttons	Navigate menu options	Movement
□ button	-	Primary action (see in-game controls diagram)
× button	Select menu option	Secondary action (see in-game controls diagram)
○ button	-	See in-game controls diagram
△ button	Go back a screen	See in-game controls diagram
SELECT Button	-	Credit (Insert Coins)
START Button	-	Pause
L1 Button	-	Player starts game (after inserting coins)
L2 Button	-	Start a two player game on one controller

Note: "Credit" means inserting a coin. All games featured in Taito Legends 2 require one or more credits before you play, just like the real arcade machines. To start a game, first insert credits and then press the L1 button to play.

## NAVIGATING THE MENUS

All menus within TRITO LEGENDS 2 are navigated in the same way. Use the up or down directional buttons or the left analog stick to highlight a menu item and press the X button to select an option. Press the C button to return to the previous menu screen. Use the left or right directional buttons or the left analog stick to cycle through choices or move sliders.

## PLAYING A GAME

On the Game Select Screen, select a game using the directional buttons or left analog stick and press the X button. Pressing the L1 button or R1 button on the Game Select Screen lets you change the method of sorting the game list. The order can be chronological, alphabetical or your favorites list.

Once you have selected a game, you will see the Game Description Screen. Here you can customize the game difficulty levels, number of lives and button settings.

**Note:** The options for customizing the game depend on the game itself; the options will vary between games.

To change a game option, highlight it using the up and down directional buttons and then change the action with the left and right directional buttons.

**Note:** Some games have an option to set the difficulty separately for each stage (e.g. Ray Storm). Highlight this option and press the X button, to change the difficulty use the left and right directional buttons. Press the X button again to return to the Game Description Screen.

**Note:** Options colored blue are the same for every game and cannot be changed.

There are 3 additional options on this screen:

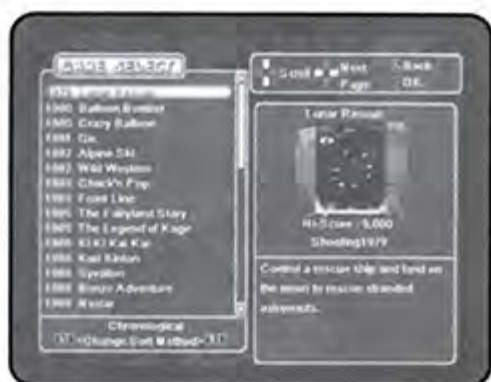
GAME START	Start the game.
ADDITIONAL INFO	Display more detailed instructions and tips on the game.
DEFAULT SETTINGS	Return the game settings to their default values (for this game only).

## OPTIONS

Select OPTIONS from the Main Title Screen to open the Options Screen.

Here you can change the following options:

SOUND	Select Stereo or Mono sound.
SE	Adjust the game sound effects volume. This affects all games.
BGM	Adjust the game music volume. This affects all games.



## OPTIONS [CONTINUED]

<b>AUTO SAVE</b>	Select ON to enable the auto save feature. This will save the high scores and game options each time you exit a game.
<b>SAVE</b>	Save the high scores and game options manually.
<b>LOAD</b>	Load the high scores and game options manually.
<b>REGISTER TO FAVORITE LIST</b>	Add or remove games to your Favorites List.
<b>RETURN TO TITLE SCREEN</b>	Exit the Option Screen and go back to the Main Title Screen.
<b>TOTAL PLAY TIME</b>	Displays the total time you have played Taito Legends 2.

## REGISTERING TO FAVORITE LIST

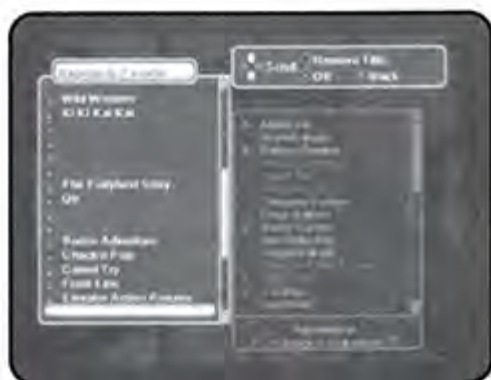
The Favorite List can be accessed from the Game Select Screen. The Favorite List lets you quickly find a game you frequently play. To add or remove games to your Favorites List, select the Register To Favorite option in the Options menu.

### HOW TO ADD AN ENTRY

In the left window, select an empty game slot and press the **X** button.

In the right window, select a title to add to the Favorite List and press **X** button to add the title to the list.

To delete a game from the list, select the title and press the **□** button.



## PAUSE MENU

During a game, press the **START** button to open the Pause Menu.

<b>RESUME GAME</b>	Close the Pause Menu and resume the game.
<b>GAME DESCRIPTION</b>	Opens the Game Description Screen. You can change the button settings here.
<b>SCREEN ADJUSTMENT</b>	You can adjust the screen position.
<b>RESET GAME</b>	End the current game and restart the same game.
<b>CHOOSE A LANGUAGE</b>	You can change the menu language from here (the language of the games cannot be changed)
<b>RETURN TO MAIN TITLE SCREEN</b>	End the current game and return to the Main Title Screen. If you have enabled the auto save feature in the Option Screen, all the game data is saved at this point.

## THE GAMES IN TRITO LEGENDS 2

### ALPINE SKI

- Challenge downhill skiing including slalom racing and a jump competition.

### ARABIAN MAGIC

- Non-stop action in the mystic world of Arabian Nights.

### BALLOON BOMBER

- Shoot and destroy balloon bombs dropped from a bi-plane.

### BONZE ADVENTURE

- As a monk, journey through the seven Hells to get rid of the evil spirit from King Emma-0.

### CAMELTRY

- Turn and tilt the maze to lead your ball to the goal!

### CHACK'N POP

- Use bombs to rescue the caged hearts and escape from the maze!

### CLEOPATRA FORTUNE

- Destroy the blocks by lining up them up or surrounding with stones!

### CRAZY BALLOON

- Use precise control to guide the swinging balloon to the goal.

### DARIUS GAIDEN

- A sequel to the epic Darius series. This time the mid-boss can be your ally against the sea creature enemies.

### DON DOHO DON

- As the carpenters Bob and Jim, smash and throw your enemies with the hammer.

### DUNGEON MAGIC

- Four warriors venture into the world of magic to save the Princess from the evil wizard!





## ELEVATOR ACTION RETURNS

- Find secret data to stop the nuclear terrorists. An updated version of the classic Elevator Action.

## FOOTBALL CHAMP

- Challenge the world's best seven soccer teams with your super techniques!

## FRONT LINE

- With gun and grenades in your hand, jump into a tank and assault the enemy fort!

## G DARIUS

- Capture your enemy and blow-up the big battleship in this 3D shooting epic!

## GEHIRINDAN

- Blast your way through several time periods in this vertical scrolling shoot'em up.

## GRID SEEKER

- With your state-of-the-art weapon GRID, collect enemy bullets to stock bombs. Supports two-player simultaneous play.

## GROWL

- Wipe out an army of evil poachers in order to protect the wild animals.

## GUN & FRONTIER

- Collect gold and stock bombs to create the grand explosion! A visually stunning vertical scrolling shooter.

## INSECTOR X

- Battle against the insect army with your special insecticide weapons.

## KIKI KAIKAI

- Priestess Saqo-chan must repel ghosts in order to rescue Seven Lucky Gods!

## KURI KINTON

- With your super kung-fu skills, penetrate the enemy's headquarter to rescue the Chris family.



## Liquid Kids

- To rescue your kidnapped friends, attack the enemy with your magical water bomb.

## Lunar Rescue

- Control a rescue ship and land on the moon to rescue stranded astronauts.

## Metal Black

- A horizontal scrolling shoot'em up with fantastic graphics!

## Nastar

- A sequel to Rastan. Defeat the monsters with various attack methods and three weapons!

## Puchi Carat

- Hit the ball to knock out jewels. Simple but addictive action puzzle game!

## Puzzle Bobble 2

- Compete against your rivals in the bubble-popping puzzle action!

## Qix

- Increase your territory by drawing squares while avoiding the menacing QIX.

## Raimais

- Explore the Labyrinth and rescue your captured brother! Collect all dots in each maze to open the exits.

## Ray Storm

- A 3D follow up to Ray Force featuring a lock-on laser system.

## Space Invaders '95

- A Space invaders sequel featuring cute characters.

## Space Invaders DX

- This special edition of Space Invaders includes the original classic game and other arranged versions.

## Super Space Invaders '91

- An updated version of Space Invaders. Attack UFOs and gain items to power up!

## Sqvalion

- Control the mechanical dragon Sqvalion and find your way through ever changing magical dungeon.

## The Fairyland Story

- Control Ptolemy the Witch and turn the enemy into cake with magic.

## The Legend of Hage

- As a Ninja, defeat the evils from Devil's World and save the Princess.

## Violence Fight

- Control the characters with various fighting styles and engage in the single or two-player bouts.

## Wild Western

- As Sheriff in the Wild West, you must defeat the train robbing bandits!



## Credits

EXECUTIVE PRODUCER

Simon Prytherch

INTERNATIONAL LICENSING MANAGER

Tadasu Hasegawa

QA

Phil Octave

James Knight

Cliff Ramsey

## Technical Support

Live support is available most weekdays between 10:00am and 6:00pm Central Time.  
We may be closed on major holidays.

Tech Support Number

763-231-8050

Support Email

[support@boldgames.com](mailto:support@boldgames.com)

Customer Service Number

763-231-8100

## END USER LICENSE AGREEMENT

PLEASE READ CAREFULLY. BY USING THIS SOFTWARE, YOU ARE AGREEING TO BE BOUND BY THE TERMS OF THIS LICENSE. IF YOU DO NOT AGREE TO THESE TERMS, PROMPTLY RETURN THE PRODUCT IN ITS PACKAGING TO THE PLACE WHERE YOU OBTAINED IT.

1. License. The software game disc(s), cartridge, or Game Pak accompanying this license (the "Software") and the related documentation are licensed to you by us ("Destineer") and are subject to this license. You may not delete the copyright notices or any other proprietary legends on the original copy of the Software. You agree that the Software will not be shipped, transferred or exported into any country in violation of the U.S. Export Administration Act (or any other law governing such matters) by you or anyone at your direction and that will not utilize and will not authorize anyone to utilize, in any other manner, the Software in violation of any applicable law. The Software may not be downloaded or otherwise exported or reexported into (or to a national or resident of) any country to which the U.S. has embargoed goods or to anyone or into any country who/which are prohibited by applicable law, from receiving such property.

2. Restrictions. The Software contains copyrighted material, trade secrets and other proprietary material. You may not decompile, modify, reverse engineer, publicly display, prepare derivative works based on the Software, disassemble or otherwise reproduce the Software. You may not rent, sell, lease, sublicense or distribute the Software. You may not offer the Software on a pay-per-play basis or otherwise commercially exploit the Software or use the Software for any commercial purpose. You may not electronically transmit the Software from one computer to another or over a network.

3. Termination. This license is effective until terminated. You may terminate this license at any time by destroying the Software and related documentation. This license will terminate immediately without notice from us if you fail to comply with any provision of this license. Upon termination, you must destroy the Software and related documentation.

4. Disclaimer of Warranty on Software. You are aware and agree that use of the Software and the media on which it is recorded is at your sole risk. The Software, related documentation and the media are provided "AS IS". Unless otherwise provided by applicable law, Destineer Publishing Corp. ("Destineer") warrants to the original purchaser of this product that the Software storage medium will be free from defects in material and workmanship under normal use for ninety (90) days from the date of purchase. This warranty is void if the defect has arisen through accident, abuse, neglect or misapplication.

DESTINEER EXPRESSLY DISCLAIMS ALL OTHER WARRANTIES, EXPRESS OR IMPLIED, INCLUDING BUT NOT LIMITED TO, THE IMPLIED WARRANTIES OF MERCHANTABILITY AND FITNESS FOR A PARTICULAR PURPOSE. WE DO NOT WARRANT THAT THE FUNCTIONS CONTAINED IN THE SOFTWARE WILL MEET YOUR REQUIREMENTS.

## END USER LICENSE AGREEMENT (continued)

NO ORAL OR WRITTEN INFORMATION OR ADVICE GIVEN BY US OR ANY OF OUR AUTHORIZED REPRESENTATIVES SHALL CREATE A WARRANTY OR IN ANY WAY INCREASE THE SCOPE OF THIS WARRANTY. SOME JURISDICTIONS DO NOT ALLOW THE EXCLUSION OF IMPLIED WARRANTIES, SO THE ABOVE EXCLUSIONS MAY NOT APPLY TO YOU.

5. **Limitation of Liability.** UNDER NO CIRCUMSTANCES, INCLUDING NEGLIGENCE, SHALL DESTINEER OR ANY OF ITS OFFICERS, EMPLOYEES, DIRECTORYS, AGENTS, LICENSORS, LICENSEES, SUBLICENSEE OR ASSIGNS BE LIABLE FOR ANY INCIDENTAL, SPECIAL OR CONSEQUENTIAL DAMAGES THAT RESULT FROM THE USE OF OR INABILITY TO USE THE SOFTWARE OR RELATED DOCUMENTATION, EVEN IF SUCH PARTIES HAVE BEEN ADVISED OF THE POSSIBILITY OF THOSE DAMAGES. SOME JURISDICTIONS DO NOT ALLOW THE LIMITATION OR EXCLUSION OF LIABILITY FOR INCIDENTAL OR CONSEQUENTIAL DAMAGES SO THE ABOVE LIMITATION OR EXCLUSION MAY NOT APPLY TO YOU. In no event shall our total liability to you for all damages, losses, and causes of action (whether in contract, tort or otherwise) exceed the amount paid by you for the Software.

6. **Controlling Law, Merger and Severability.** This license constitutes the entire agreement between the parties with respect to the use of the Software and the related documentation and shall be governed by Minnesota law. Should any portion of this license be held void, illegal or otherwise unenforceable, such portion shall be severed from the license and the remainder of the license shall be enforced to the maximum extent possible.

7. **Copyright.** The Software and all copyrights, trademarks and all other conceivable intellectual property rights related to the Software are owned by Destineer Publishing Corp., or its licensors and are protected by United States copyright laws, international treaty provisions and all applicable law, such as the Lanham Act. You must treat the Software like any other copyrighted material, as required by 17 U.S.C. section 101 et seq. and other applicable law. You agree that you are receiving a copy of the Software by license only and not by sale and that the "first sale" doctrine of 17 U.S.C. section 109 does not apply to your receipt or use of the Software.

Please do not make unauthorized copies. The program you've purchased was produced through the efforts of many people who earn their livelihood from its lawful use. Don't make copies for others who have not paid for the right to use it. To report copyright violations to the Software Publishers Association, call 1-800-388-PIR8 or write: Software Publishers Association, 1101 Connecticut Ave., Suite 901, NW, Washington, DC 20036

This program is protected by United States federal and international copyright laws. All trademarks mentioned in this manual are property of their respective owners.  
**YOU MAY NOT DISTRIBUTE THIS VERSION OF THE SOFTWARE.**

## **LIMITED WARRANTY**

By installing, copying, or otherwise using this Software product, you agree to be bound by the limitations set out below.

Destineer warrants that the software will perform substantially in accordance with the accompanying written materials for a period of ninety (90) days from the date of receipt. Any implied warranties on the software are limited to ninety (90) days, unless the effect of this clause has been specifically excluded by applicable law.

## **CUSTOMER REMEDIES**

Destineer's entire liability and your exclusive remedy shall be, at Destineer's option, either (a) return of the price paid, or (b) replacement of the software or hardware that does not meet this Limited Warranty and which is returned to the place of purchase with a copy of your receipt. This Limited Warranty is void if failure of the software has resulted from accident, abuse, or misapplication. Any replacement software will be warranted for the remainder of the original warranty or thirty (30) days, whichever is longer.

## **NO OTHER WARRANTIES**

To the maximum extent permitted by applicable law, Destineer and its suppliers disclaim all other representations, warranties, conditions or other terms, either express or implied, including, but not limited to implied warranties and/or conditions of merchantability and fitness for a particular purpose, with regard to the software and the accompanying written materials.

## **NO LIABILITY FOR CONSEQUENTIAL DAMAGES**

To the maximum extent permitted by applicable law, in no event shall Destineer or its suppliers be liable for any damages whatsoever (including without limitation, direct or indirect damages for personal injury, loss of business profits, business interruption, loss of business information, or any other pecuniary loss) arising out of the use of or inability to use this product, even if Destineer has been advised of the possibility of such damages. In any case, Destineer's and its suppliers' entire liability under any provision of this agreement shall be limited to the amount actually paid by you for the software, unless the effect of this clause has been specifically excluded by applicable law.

Any unauthorised copying, reproduction, rental or broadcast of the information contained on the accompanying disc is a violation of applicable laws. This Software License Agreement is governed by the law of England.



**TAITO**



  
**DESTINEER**

Taito Legends 2 Software © TAITO CORP. 1978-2006. All rights reserved. Published and distributed under license by Empire Interactive Europe Limited. All rights reserved. Empire and "E" are trademarks or registered trademarks of Empire Interactive Europe Ltd in the UK, Europe, and/or other countries. Destineer and the Destineer logo are registered trademarks of Destineer. All rights reserved.